

# The Eye of the Storm

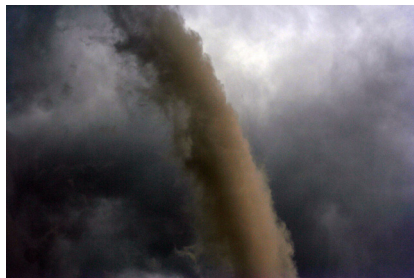
While tornadoes occur in many parts of the world, they are most frequently found in the United States, occasionally including New York City. Typically a tornado is spawned by powerful thunderstorms, but it can also accompany a tropical storm or hurricane as the storm moves onto land. Most tornado-related damages result from high wind speeds, wind-blown debris, and large hail. Tornadoes are not limited to one season; they can occur at any time of year.

## Know Your Weather Words!

- **Tornado:** A rotating column of air extending from the ground to the base of a thunderstorm that is intense enough at the surface to cause damage. Wind speeds vary from 40 mph to 318 mph.
- **Tornado Watch:** Issued when conditions are favorable for the development of tornadoes in and close to the watch area. A tornado watch can be in effect for several hours.
- **Tornado Warning:** Issued when a tornado is indicated by radar or sighted by storm spotters.
- **Fujita Scale:** Used to measure a tornado's strength. The weakest tornado is an EF0, and the strongest is an EF5.

## What to Do If a Tornado Is Likely

- If you are indoors, go to your basement or the lowest point in your residence. Move to a small interior room or hallway and get under a sturdy piece of furniture. Stay away from windows.
- If you are in a car, do not try to outrun a tornado. Get out of your car and seek shelter.
- If you are outdoors, head for shelter. If you can't find shelter, take cover in a ditch or similar area. Cover your head with your hands. Do not take cover under an overpass or bridge.
- Avoid buildings with wide roofs, such as auditoriums, cafeterias, large hallways, or shopping malls.



Let's get ready and stay safe if tornadoes occur in our area!

## Quick activities to try at home:

- Do you remember a time when a tornado struck near New York City? Share with your child what you remember about that storm. Discuss as a family steps you would take to stay safe.
- Identify the safest areas in your home in case of a tornado. Remember, you should move to an interior room on the lowest floor, staying away from windows. Make sure everyone in your household knows what this area is.
- Review your household disaster plan. Remind everyone where your designated meeting places are and who your out-of-state contact is in case local phone lines are busy.

## To Learn More:

Office of Emergency Management, [http://www.nyc.gov/html/oem/html/hazards/weather\\_tornado.shtml](http://www.nyc.gov/html/oem/html/hazards/weather_tornado.shtml)

NYC Office of Emergency Management, [www.NYC.gov/oem](http://www.NYC.gov/oem)

OEM on Facebook, [www.facebook.com/NYC/emergencymanagement](http://www.facebook.com/NYC/emergencymanagement)

OEM on Twitter, @nycoem

Notify NYC, Register for emergency notifications by visiting [NYC.gov/notifynyc](http://NYC.gov/notifynyc), calling 311, or following @NotifyNYC on Twitter

American Red Cross, <http://www.redcross.org/prepare/disaster/tornado>

<http://www.nws.noaa.gov/om/reachout/kidspage.shtml>